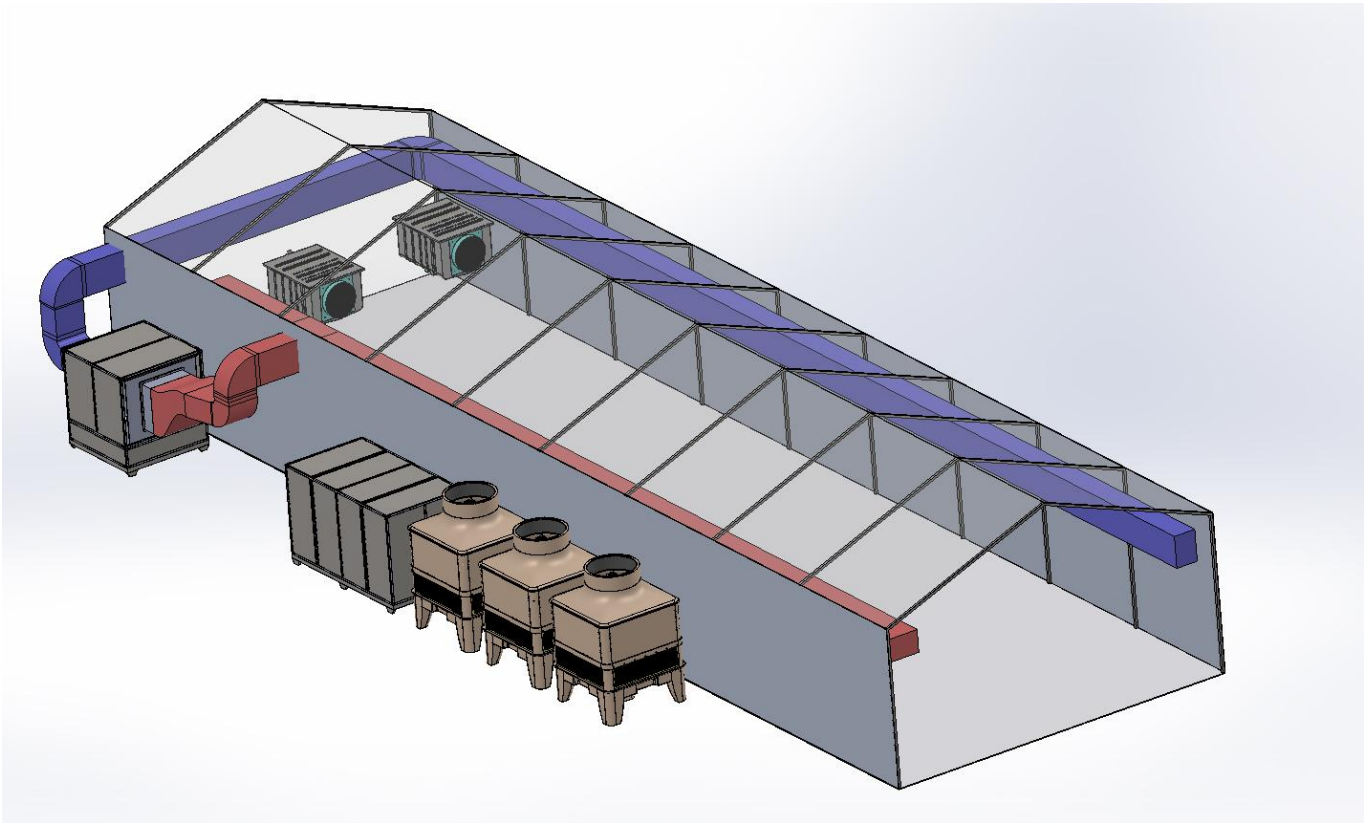




DRAGON
Dehumidification System

Model Specifications



Grow House Simulation

Dragon is a modular de-humidification system made out of indoor and outdoor units.

Outdoor units include Regenerator (Machine Room + Cooling Towers) and an Air Handling Unit.

Indoor Unit includes the rest of the air handlers which are also called Terminals, distributes air inside.

Regenerator	DRG 05	DRG 10	DRG 20	DRG 60	DRG 120
Water Extraction	25 L/hour	50 L/hour	100 L/hour	300 L/hour	600 L/hour
Power	5 kW	10 kW	20 kW	60 kW	120 kW
Efficiency	0.02 kW/L	0.02 kW/L	0.02 kW/L	0.02 kW/L	0.02 kW/L
Operation Ranges					
Outdoor Temperature	0 C° / 40 C°	0 C° / 40 C°	0 C° / 40 C°	0 C° / 40 C°	0 C° / 40 C°
Indoor Temperature	5 C° / 40 C°	5 C° / 40 C°	5 C° / 40 C°	5 C° / 40 C°	5 C° / 40 C°
Capacity					
Cooling	60,000 BTU	120,000 BTU	240,000 BTU	720,000 BTU	1,440,000 BTU
Heating	13,000 BTU	26,000 BTU	52,000 BTU	156,000 BTU	312,000 BTU
Electrical	400VAC, 50Hz, 3ph	400VAC, 50Hz, 3ph	400VAC, 50Hz, 3ph	400VAC, 50Hz, 3ph	400VAC, 50Hz, 3ph
FLA	15 Ah	30 Ah	60 Ah	180 Ah	360 Ah
Dimensions					
A		1.900 mm		3.500 mm	
B		1.530 mm		1.900 mm	
C		2.280 mm		2.154 mm	
Weight		1.000 kg		2.000 kg	
Indoor unit capacity per regenerator					
Cooling Tower	1	1	1	3	6
Indoor Unit DRGTR215	1	2	4	12	24
Indoor Unit DRGAHU230	N/A	1	2	6	8

Cooling Tower	DRG TW 220
----------------------	-------------------

Power	4 kW
-------	------

Air Flow	30.000 m ³ /h
----------	--------------------------

Operation Ranges

Outdoor Temperature	0 C° / 40 C°
---------------------	--------------

Indoor Temperature	5 C° / 40 C°
--------------------	--------------

Capacity

Electrical	400VAC, 50Hz, 3ph
------------	-------------------

FLA	8.2 Ah
-----	--------

Dimensions

A	1.980 mm
---	----------

B	1.980 mm
---	----------

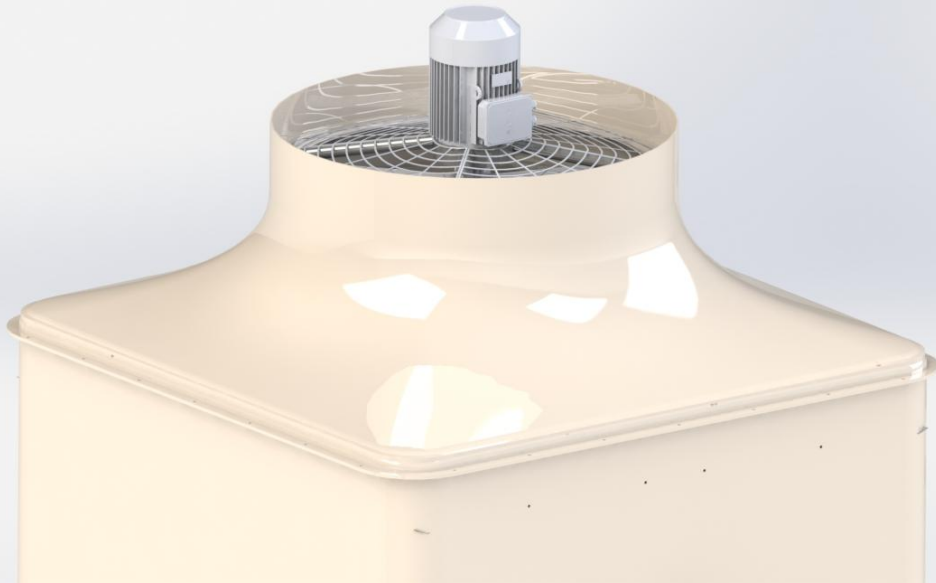
C	2.910 mm
---	----------

Weight	380 kg
--------	--------

Amount of Units	3
-----------------	---

Noise level	80 db
-------------	-------

Air Handling Units	DRGTR 215	DRG AHU 230
Power	1.1 kW	4 kW
Air Flow	15.000 m3/h	30.000 m3/h
Operation Ranges		
Outdoor Temperature	0 C° / 40 C°	0 C° / 40 C°
Indoor Temperature	5 C° / 40 C°	5 C° / 40 C°
Electrical	400VAC, 50Hz, 3ph	400VAC, 50Hz, 3ph
FLA	2.6 amp	8.2 amp
Dimensions		
A	1.500 mm	2.000 mm
B	1.200 mm	2.000 mm
C	910 mm	2.171 mm
Weight	150 kg	1.000 kg
Amount of Units	12	6



More information

Please contact info@enerama.com for further assistance on the Dragon Dehumidification System.

Enerama Environmental Technologies Inc.

www.enerama.com

UNITED STATES

201 Ocean Ave. suite 1409P
Santa Monica, CA. 90402

CANADA

1515 Bywood Place,
Victoria, BC. V8S 1X7

TURKEY

IAYOSB, 10. Sokak 1
34953 Tuzla, 34953 Istanbul